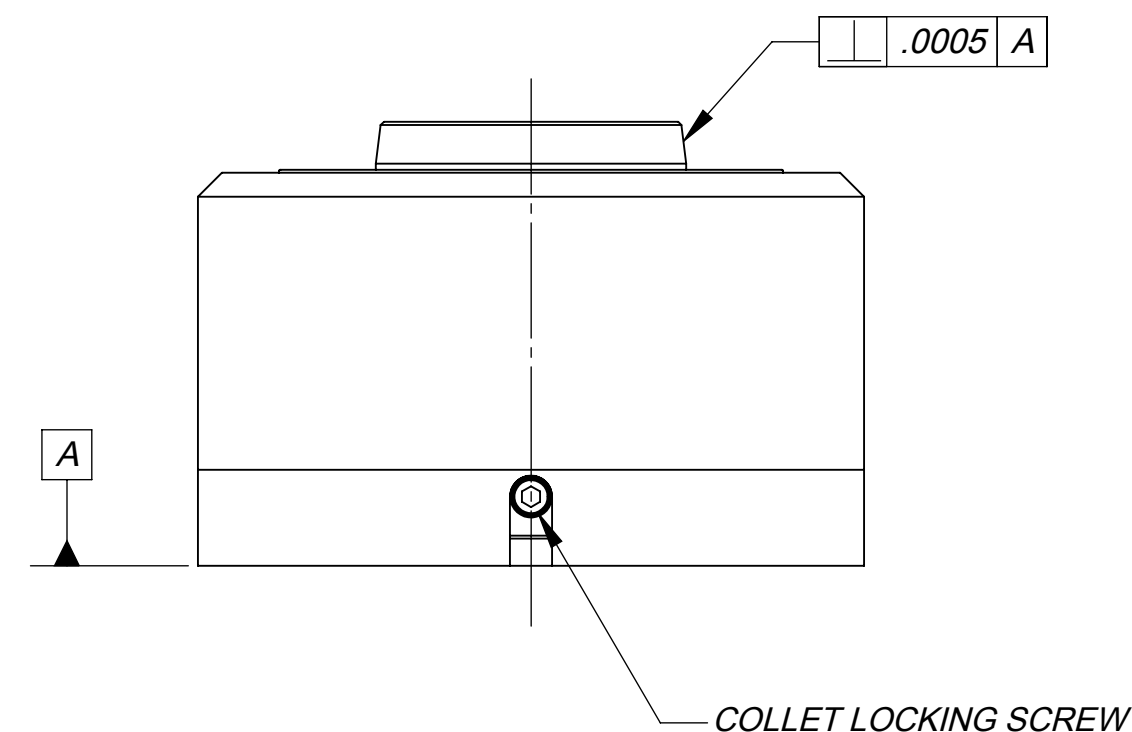
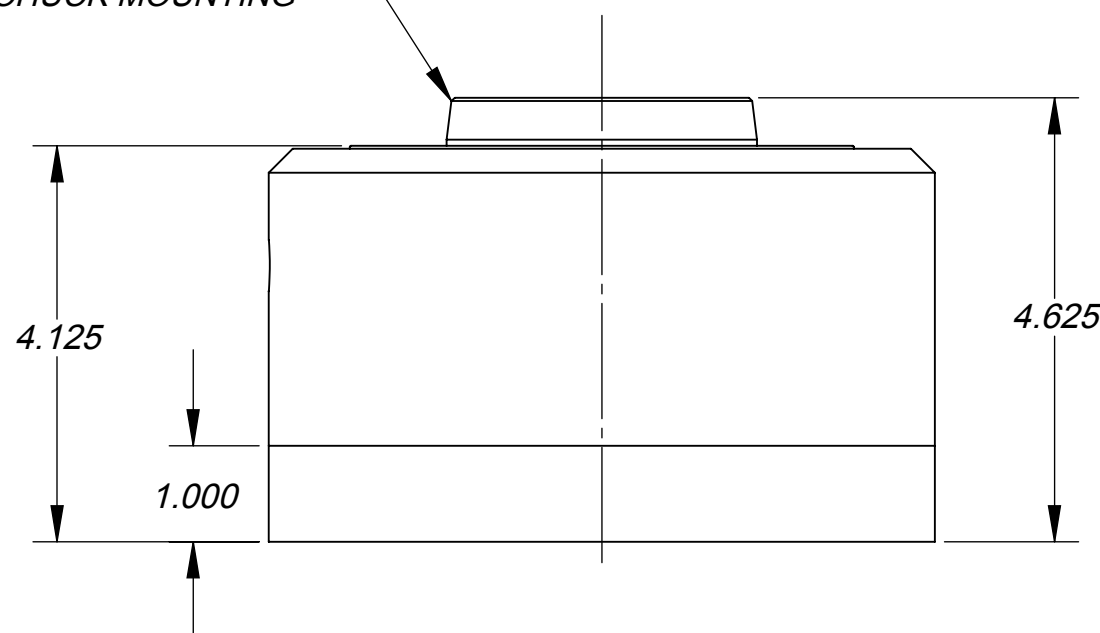
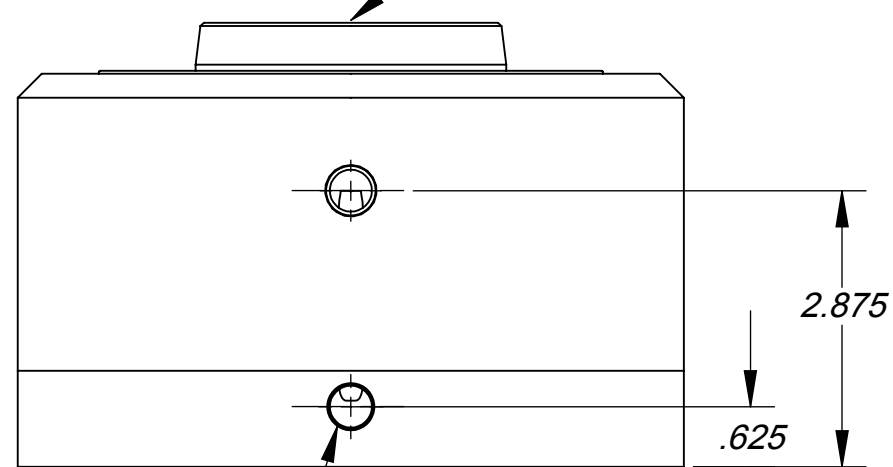
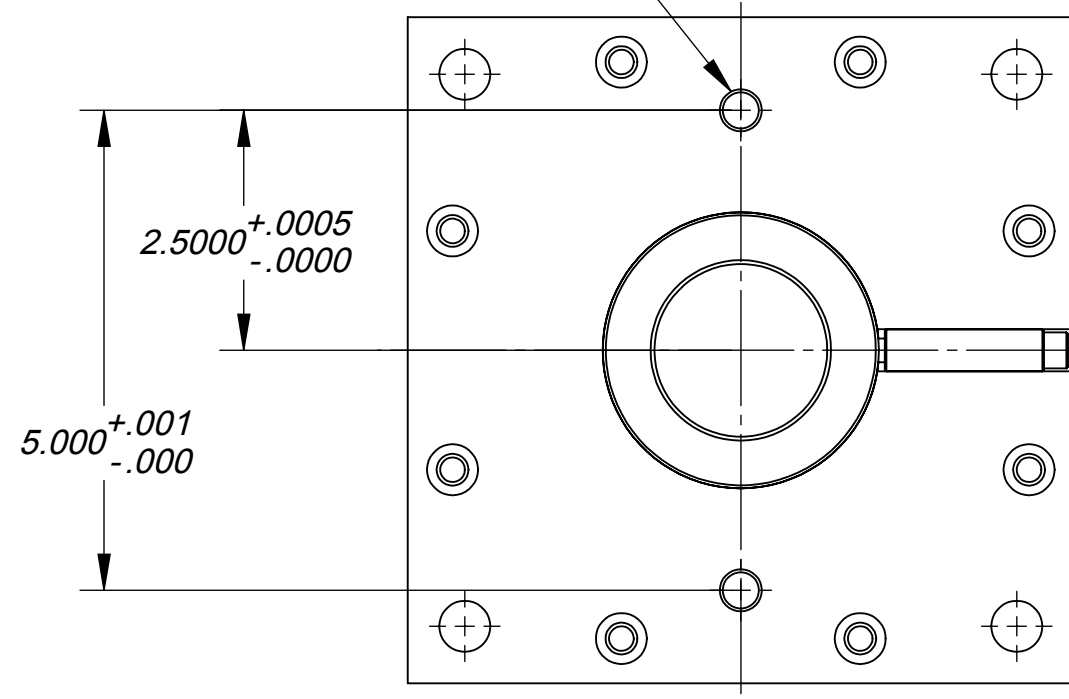


MAY ALSO USE A 16C COLLET WITHOUT USING THE STEP CHUCK CLOSER

STANDARD A2-5 NOSE FOR STEP CHUCK MOUNTING




$\phi$  .375 DOWEL LOCATING HOLES  
2X

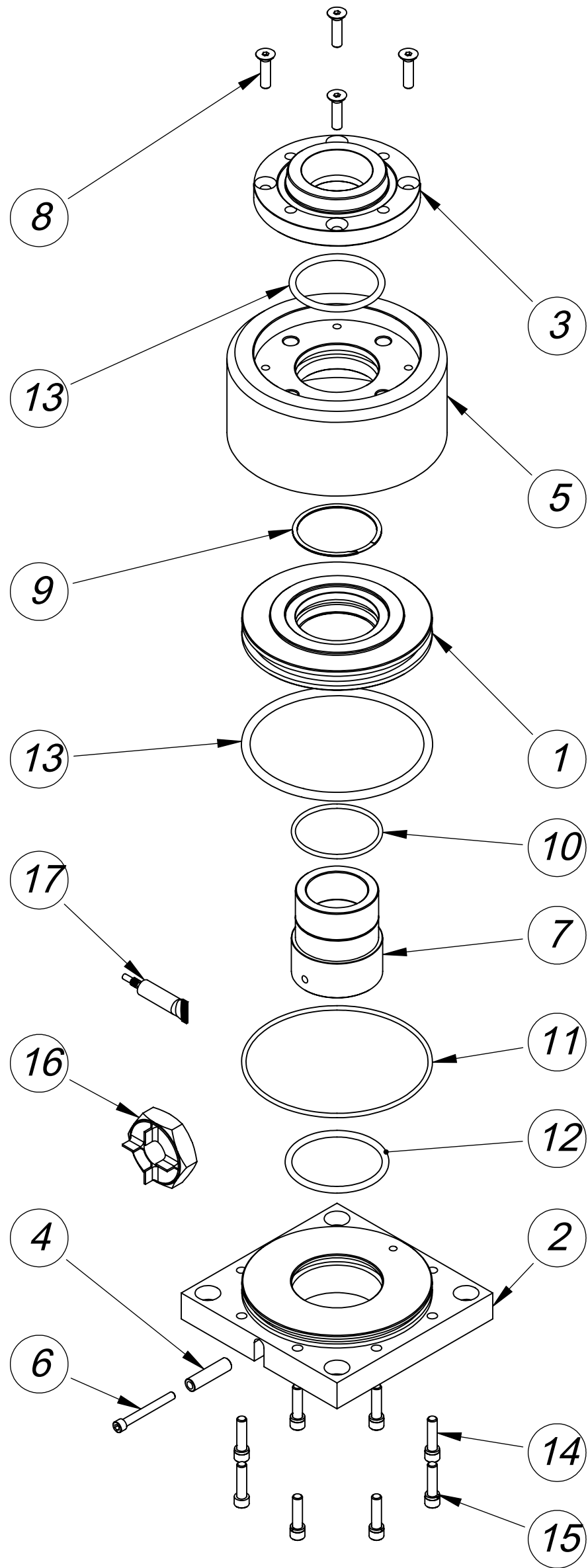


THIS DOCUMENT AND ITS CONTENTS ARE THE PROPERTY OF LEXAIR, INC. THEY ARE FURNISHED TO YOU ON THE FOLLOWING CONDITIONS: NO RIGHT OR LICENSE IN RESPECT OF THIS DOCUMENT OR ITS CONTENTS, SIGNER OR WANTED IN SUPPLYING THE DOCUMENT TO YOU. THIS DOCUMENT OR ITS CONTENTS ARE NOT TO BE REPRODUCED OR TREATED IN ANY MANNER INCONSISTENT WITH THE RIGHTS OF LEXAIR, INC. OR TO ITS DETRIMENT AND ARE NOT TO BE COPIED, REPRODUCED, OR DISCLOSED OF, EXCEPT WITH ITS PRIOR WRITTEN CONSENT.

REVISIONS

ECL: 05024 02-04-05 MBR

<b>Tolerances Unless Otherwise Specified:</b> TYPE FINISHED AS CAST DEC .00 ± .015" ± .030" DEC .000 ± .005" ± .010" FRACTIONAL ± 1/64" ± 1/32" ANGLES * ± 1/2° ± 1° FINISH 175 μ in.	MATERIAL SPEC.	PC. NO.: 65204
	PROCESS SPEC.	MADE FROM: SEE B.O.M.
<b>16C PNEUMATIC CLOSER</b> CATALOG REFERENCE  2025 Mercer RD, Lexington, Kentucky 40511	MODEL FILE: 65204.SLDASM CAD FILE: 65204.slddrw	SHEET NO. 1 of 2 SHEETS SCALE 1:2 APPROX. WT.
	C 65204	



THIS DOCUMENT AND ITS CONTENTS ARE THE PROPERTY OF LEXAIR, INC. THEY ARE FURNISHED TO YOU ON THE FOLLOWING CONDITIONS:  
 NO RIGHT OR LICENSE IN RESPECT OF THIS DOCUMENT OR ITS CONTENTS IS GIVEN OR WAIVED IN SUPPLYING THE DOCUMENT TO YOU.  
 THIS DOCUMENT OR ITS CONTENTS ARE NOT TO BE USED OR TREATED IN ANY MANNER INCONSISTENT WITH THE RIGHTS OF LEXAIR, INC.  
 OR TO ITS DERIVATIVE AND ARE NOT TO BE COPIED, REPRODUCED, OR DISCLOSED OF, EXCEPT WITH ITS PRIOR WRITTEN CONSENT.

REVISIONS

ECL: 05024 02-04-05 MBR

<b>Tolerances Unless Otherwise Specified:</b> TYPE FINISHED AS CAST DEC .00 ± .015" ± .030" DEC .000 ± .005" ± .010" FRACTIONAL ± 1/64" ± 1/32" ANGLES * ± 1/2" ± 1"	MATERIAL SPEC.			PC. NO.: 65204
	PROCESS SPEC.			MADE FROM: SEE B.O.M.
FINISH 175 μ in.				MODEL FILE: 65204.SLDASM
<b>16C PNEUMATIC CLOSER</b> CATALOG REFERENCE				CAD FILE: 65204.sldrw
				C65204
				SHEET NO. 2 of 2 SHEETS
2025 Mercer RD, Lexington, Kentucky 40511				SCALE 1:2
02-04-05				APPROX. WT.